



OSHKI-WENJACK

OSHKI-PIMACHE-O-WIN
THE WENJACK EDUCATION INSTITUTE

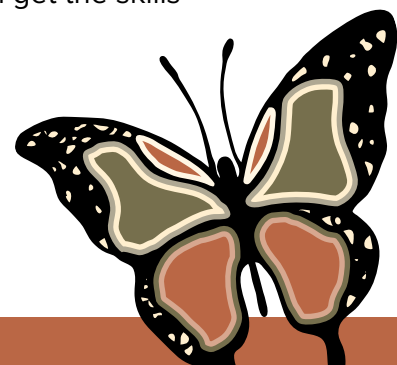
Personal Support Worker Certificate Program



New Beginnings

Become a Vital Part of the Health Care Team

Do you have the care, compassion, and drive to help people in your community who need help with day-to-day activities? Personal Support Workers (PSWs) are important members of the health care team. They help people with daily tasks such as personal care, home management, and social activities. You'll work with other health professionals to help your clients do what they may not be able to do on their own. Oshki-Wenjack offers this certificate program through a blended delivery model of online courses, in-person lab training skills, and in-person clinical placements in Thunder Bay. You'll get the skills you need for a successful PSW career.



Personal Support Worker Certificate Program



Program:

1 Year (2 semesters)

Ontario College Certificate, Online Learning

Academic Requirements:

- Grade 12 Diploma or mature student test or College Access graduate
- Must be fully vaccinated against COVID-19 (2 doses)

Courses:

First Semester

CS 050 College Writing
PN 128 Therapeutic Nurse Client Relationships
PW 100 Fundamental Skills for PSW Practice
PW 101 Supportive Care Theory I
PW 102 Professional Growth
PW 130 Anatomy & Physiology

Second Semester

PW 200 PSW Clinical Practice I
PW 201 Supportive Care Theory II
PW 208 PSW Clinical Practice II
PW 230 Growth & Development

Employment Opportunities:

Graduates may find employment in:

- Community home-care settings
- Private agencies
- Retirement homes
- Nursing homes
- Hospices
- Long-term care facilities
- Hospitals
- Health clinics

Are You Looking for a New Pathway?

Oshki-Wenjack provides college and university programs to Nishnawbe Aski Nation and other learners in a safe, inclusive, supportive and culturally enriched learning environment. Most programs blend some in-person learning in Thunder Bay with more online learning in your home community. Personalized supports help improve student learning – and student success.

The Oshki-Wenjack campus is located in Thunder Bay, Ontario. The campus includes a cultural room, kitchen amenities, a computer lab and a student lounge. It is centrally located in the downtown south core Fort William Business District and is close to bus transportation.

For information, please contact our Recruitment Office:

Toll Free: 1-866-636-7454 | Phone: 1-807-626-1880 | recruitment@oshki.ca

oshki.ca/programs/personal-support-worker/

